



Christmas Closure

Last Group Sessions as follows:

Stay & Play 12th December

Dad's Lego Club 13th December

Parent Support Group 14th December

Saturday session 16th December

Monday session 18th December

Tuesday session 19th December

Young Carers 21st December

Christmas Trip



If you have tickets booked for the Santaland Train Journey, please collect your ticket from the office. Further details of boarding times and the journey will be provided with your tickets.



Sunbeams Resource Centre

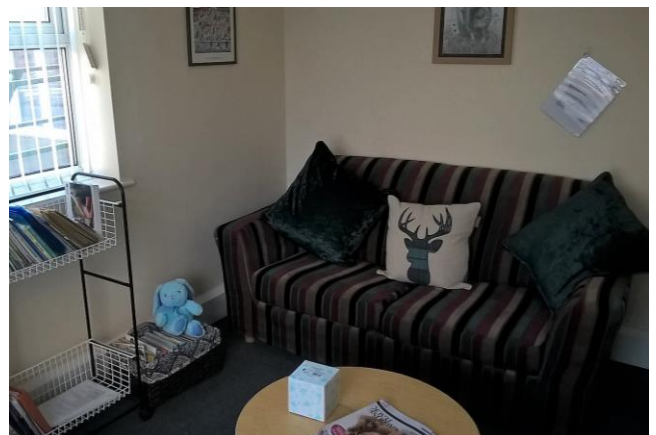
Following the Outstanding Ofsted assessment in the summer we have made exciting new plans to develop and expand Sunbeams Play starting with our new Resource Centre. The centre located to the side of Cribs and Bibs on Boundary Rd, Gt Yarmouth will provide new offices for Monica and Sue, admin office, a training room and a comfortable quiet space for parents to access support and advice or to simply sit and talk.

1-1 Support and advice is available to the families of children currently signed up to Sunbeams Play. To arrange an appointment call Sue on 07484 085777

New Friday Sessions

The training room will enable us to relocate the workshops, 123 Magic and Cygnet programmes freeing up Friday evenings at Sunbeams for a new group, lowering the current waiting list for younger members.

The new group starting in January will be for 5 to 8 year olds and run from 4.30-7.30. If you are on the waiting list and you are interested in a place or would like to move from the Saturday session please contact us for more information.



Training/Workshops

We have a range of workshops planned for 2018. To give us an idea of numbers please let us know if you are interested in attending any of them.

March 14th Teenage concerns – Introduction

April 18th Teenage concerns part 2 - communication strategies

May 16th Mental Health awareness - LD and Autism

June 27th Conflict and managing behaviour

July 18th Restrictive Practice

Sept 12th Clinical Nutrition

Oct 17th Building resilience

Nov 21st Attachment theory

Dec 12th Personality disorders

All sessions will run from 6-9pm and are free to parents of children and young people attending Sunbeams.

Further details will be provided near the workshop date

Poppy is Retiring

Sunbeams Play's mascot Poppy; was abandoned at a few days old and raised by Monica, spending many sessions playing with the children and young people attending. As Poppy has got older it is becoming harder to keep her in the centre, her natural instincts to go out and hunt places her at a high risk of danger. With this in mind it has been decided that she will retire and only visit during special.



You can still see her adventures on her own Facebook Page.

For further details

Call us on 01493 442181

Manager Monica Bates 07436 794967
Support Coordinator Sue Carr 07484 085777

info@sunbeamsplay.org.uk
<http://www.sunbeamsplay.org.uk>

Sunbeams Play 2

Sunbeams Play is growing and we are looking to expand with a new centre in Norwich. Plans are at an early stage and we are currently trying to gather information on the levels of need and ideal location. If you know anyone who may be interested please ask them to complete our questionnaire on Facebook



New Year Opening

Groups return as follows:

Tuesday session 2nd January

Young Carers 4th January

Saturday session 7th January

Monday session 8th January

Stay & Play 9th January

Dad's Club 10th January

Parent Support Group 18th January

We wish you all a very

Happy Christmas

and look forward to seeing you in the
New Year.

